

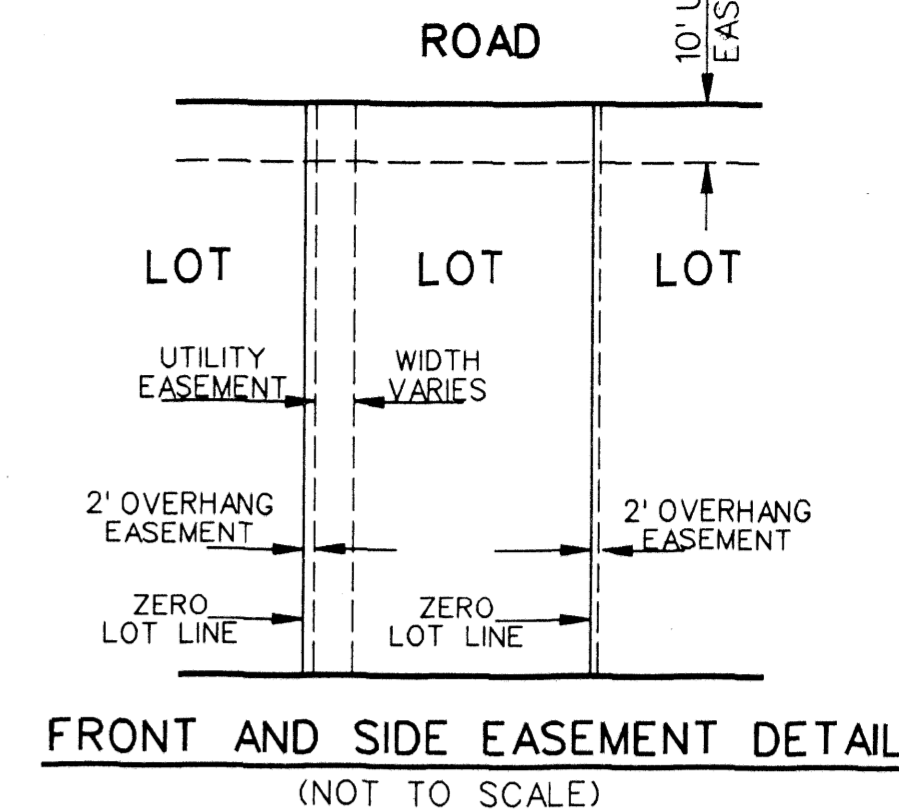
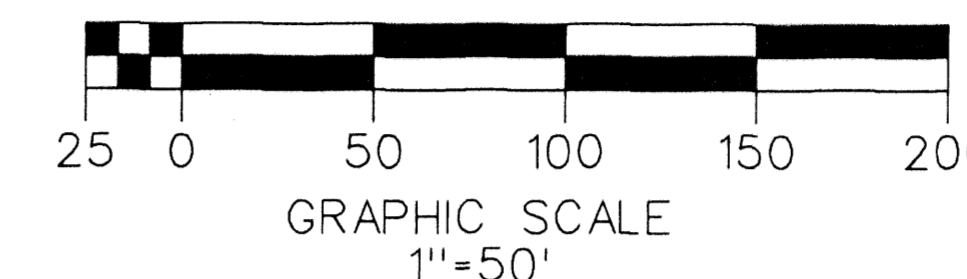
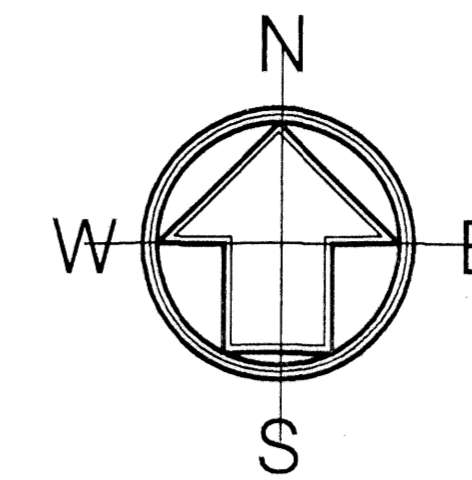
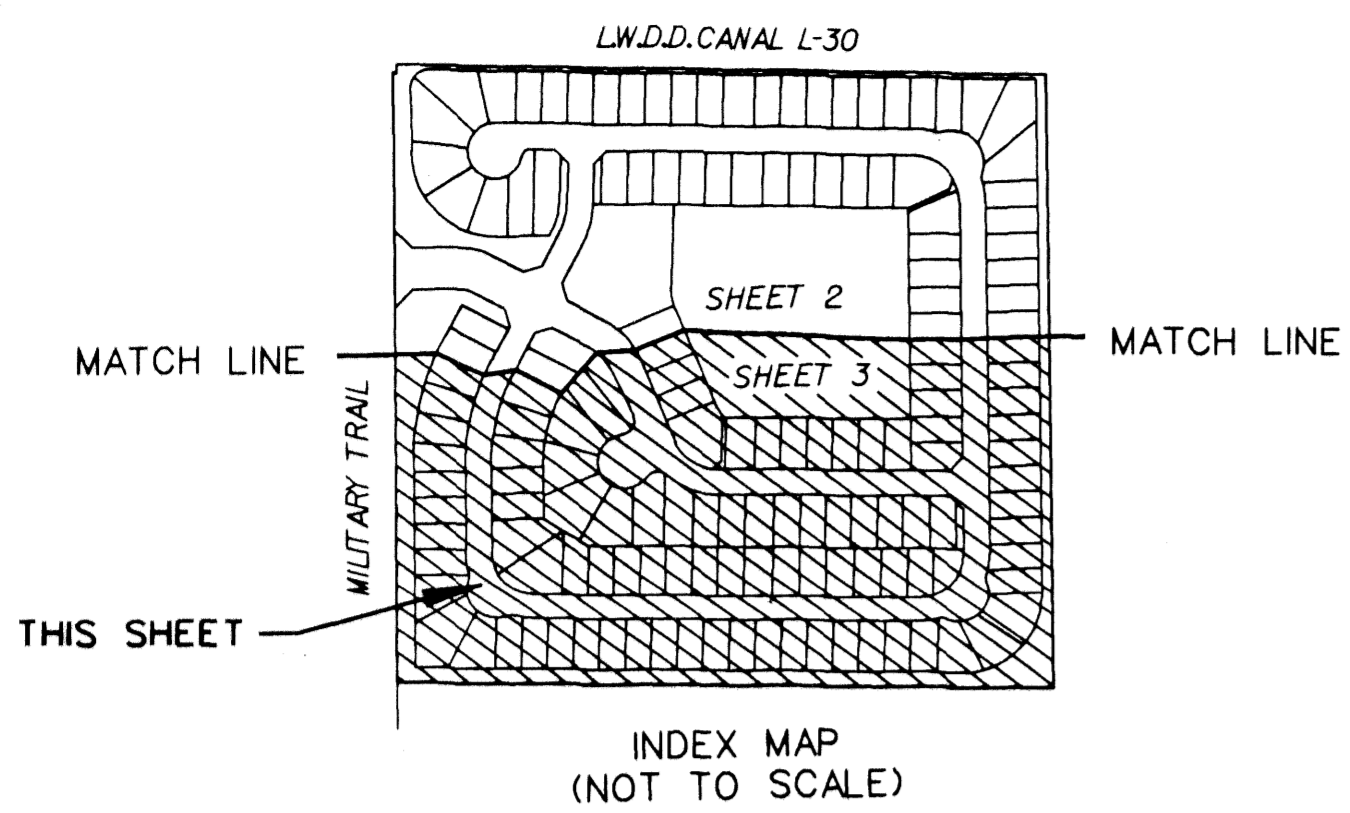
WINTERPLACE A P.U.D.

A PORTION OF
SECTION 12, TOWNSHIP 46 SOUTH, RANGE 42 EAST
PALM BEACH COUNTY, FLORIDA

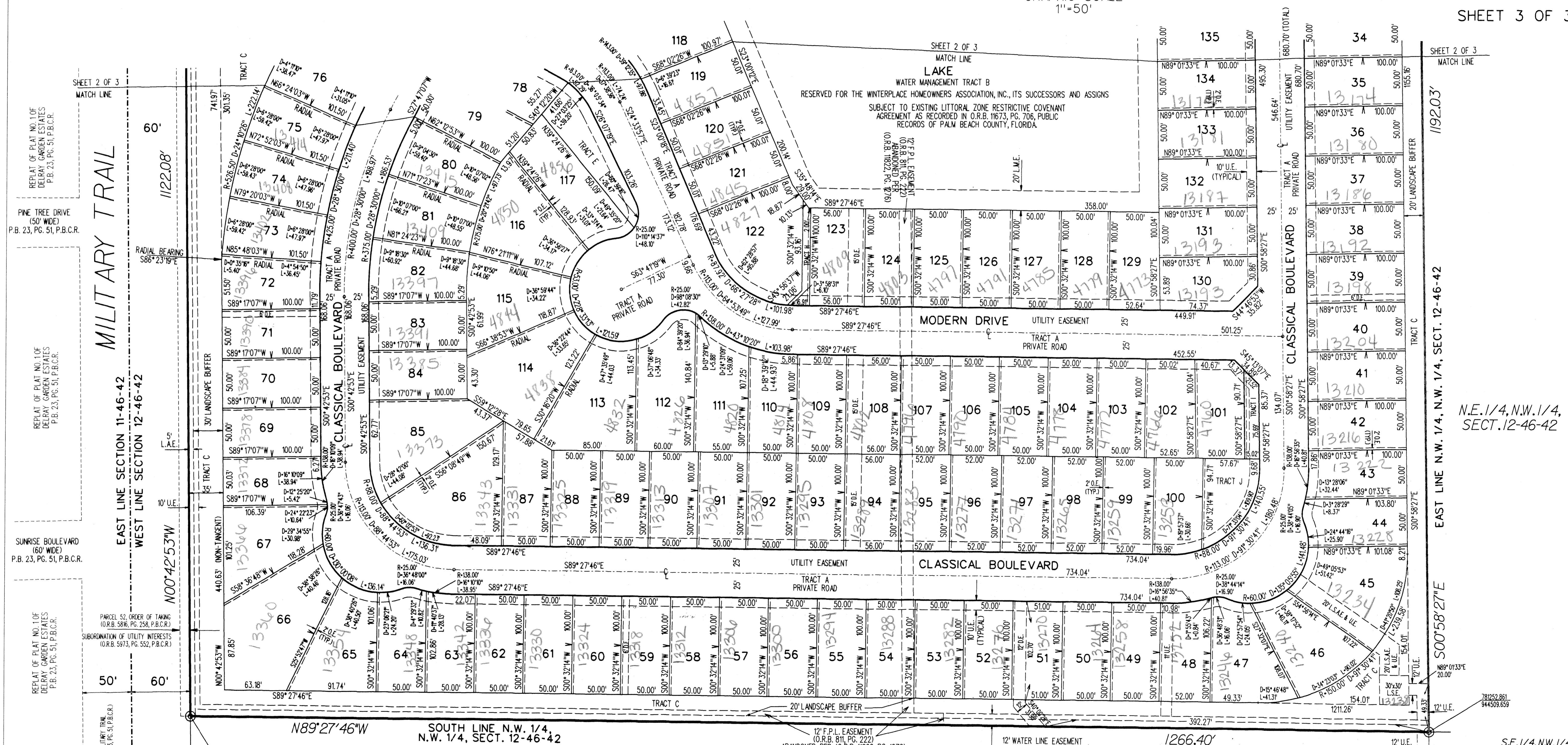
THIS INSTRUMENT PREPARED BY SCOTT A. GUZZI
SCOTT A. GUZZI AND ASSOCIATES, INC. - SURVEYORS AND MAPPERS
6041 KIMBERLY BOULEVARD, SUITE H, NORTH LAUDERDALE, FLORIDA, 33068

0710-001

181



SHEET 3 OF 3



SUBDIVISION WinterPlace A PUD
BOOK 89 PAGE 181
RECORD ZONE 6
PLAT NO. 2056
SUN-048 PDD
S.E.
TAZ 243
PUD NAME WinterPlace PUD

- ABBREVIATIONS:
- B.M. - BENCHMARK
 - C.F.T. - CALCULATED FROM FIELD TRAVERSE
 - D.E. - DRAINAGE EASEMENT
 - E. - EASTING
 - F.S. - ELEVATION
 - INC. - FLORIDA STATUTES
 - L.A.E. - LIMITED ACCESS EASEMENT
 - L.M.A.E. - LAKE MAINTENANCE ACCESS EASEMENT
 - L.M.E. - LAKE MAINTENANCE EASEMENT
 - L.S.E. - LIFT STATION EASEMENT
 - L.S.A.E. - LIFT STATION ACCESS EASEMENT
 - N. - NORTHING
 - O.E. - OVERHANG EASEMENT
 - O.R.B. - OFFICIAL RECORDS BOOK
 - P.B. - PLAT BOOK
 - P.B.C.R. - PALM BEACH COUNTY RECORDS
 - P.C. - PAGE
 - P.O.B. - POINT OF BEGINNING
 - P.O.C. - POINT OF COMMENCEMENT
 - U.E. - UTILITY EASEMENT

WEST QUARTER CORNER
SECTION 12-46-42
P.B.C. BRASS DISK FD.

S.W. 1/4, N.W. 1/4, SECT. 12-46-42

SCOTT A. GUZZI & ASSOC., INC.
Surveyors and Mappers
6041 KIMBERLY BOULEVARD
SUITE H
NORTH LAUDERDALE, FLORIDA 33068



WINTERPLACE